

THE GOLD COAST

WARRIOR

Join the Strength
Save and Invest at



GOLD COAST BRANCH
50 Morning Street, SOUTHPORT.
4215 — Phone 32 2333

**A SAFE 8 1/4pc / p.a.
INTEREST
NO FIXED TERM**

CIRCULATING THROUGHOUT THE GOLD COAST FROM PARADISE POINT TO MURWILLUMBAH PLUS INTERSTATE AND OVERSEAS.

The whole town's talking about the Jones Boys

39 80 22

for the best deal in real estate, contact: **BARRY JONES REAL ESTATE,** Top Floor, Centre Arcade, Gold Coast Highway, Surfers Paradise.

Registered as a newspaper under the Printers and Newspapers Act of 1953.

No. 556 Wednesday, March 6, 1974

5c
RECOMMENDED

Elkhorn Ave., Surfers Paradise. 39 0909.
Griffith Street, Coolangatta. 36 3333

GIANT PRINT PRESS PLAN

Ambassador College of Pasadena, USA, known throughout the world for its educational broadcasts and publications, will soon move its Australian extension organisation to the Gold Coast.

The multi-million dollar non-profit organisation will establish a printing press and administrative centre at Zareo Industrial Gardens park, on the Pacific Highway at West Burleigh, three miles from Burleigh Heads.

A landscaped setting, using existing trees and

U.S. organisation's Burleigh scheme

a 'third dimension' to living through true knowledge and education. The message of the books, do commercial work as well and would print quality color as well as educational books. first in Queensland to be built under Group Title, made law by the Queensland Government in December

Last chance to win - P30

would like to be able to break the present Hong Kong-Singapore hold on the market by printing here at the same price.

"Using the latest technology, we should be able to do that at our West Burleigh press."

More than 90 per cent of the Sydney staff has elected to move to the Gold Coast.

"They would be accommodated in new homes to be built on Royston Park Estate, not far from Zareo Industrial Gardens.

The homes will be the

church and College is broadcast to an estimated world listening audience of 150 million people annually, at a cost of \$5m.

The Pasadena College, with superb buildings and sporting facilities is set in a splendidly landscaped campus. There are also campuses in Texas and England.

The College is open to students from all walks of life and of all economic circumstances

natives, will contain a press building, administrative offices and recreational facilities for the 100 staff members.

From Sydney

The press is being moved from Sydney, where it was established by Ambassador College in 1962. It will print 'The Plain Truth', a magazine with a circulation of 3,000,000 worldwide. One quarter of a million copies of the magazine are printed for circulation in Australasia and throughout South East Asia and Philippines.

Other publications to be printed locally will include booklets with such themes as pollution, crime and drugs, marriage, dating, and family problems.

One of its publications, "How to Give Up Smoking", has been widely distributed by the Australian Medical Association.

They also publish colorful free booklets on conservation and natural history.

Ambassador College was founded by Herbert W. Armstrong in 1934. It is a non-profit educational enterprise, supported by the Worldwide Church of God.

Its objective is to provide

From March 6th

Ansett Airlines southbound jets

To Sydney

Daily 12.20 pm.
Arrives Sydney 1.30 pm., Melbourne 3.15 pm.

Friday 11.10 am.
Arrives Sydney 12.20 pm
Melbourne 2.10 pm

Saturday 1.20 pm.
Arrives Sydney 2.30 pm., Melbourne 4.00 pm.

Sunday 3.20 pm.
Arrives Sydney 4.30 pm., Melbourne 6.15 pm.

Sunday 7.55 pm.
Arrives Sydney 9.05 pm., Melbourne 11.30 pm.

Direct to Melbourne

Saturday & Sunday 11.10 am.
Arrives 1.10 pm.
Saturday 2.50 pm.
Arrives 4.50 pm.

Booking couldn't be easier. Just call your Travel Agent or Ansett Airlines of Australia on 38 1711

Established

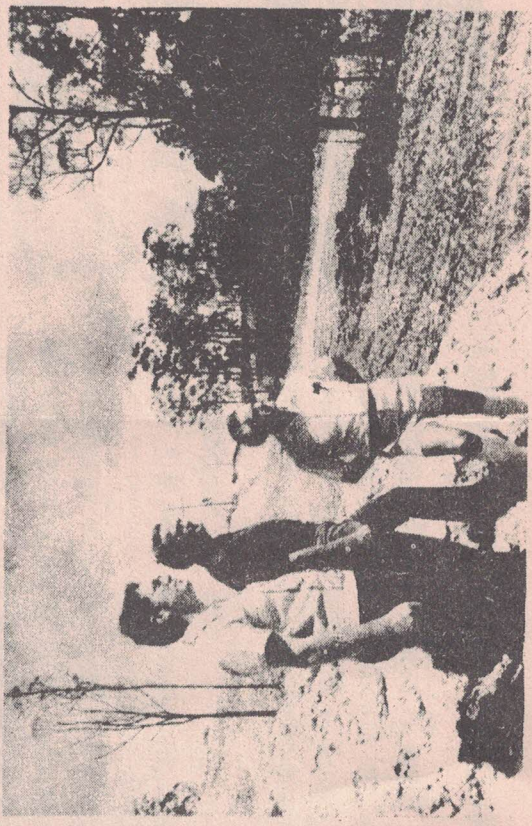
The Worldwide Church of God is established internationally and has 20 churches in Australia with congregations numbering 4000. One has now been established on the Gold Coast.

The College has extension operations in such countries as Australia, New Zealand, Israel, Switzerland, Mexico, Canada, South Africa and the Philippines.

Dennis Luker and Gene Hughes, who are supervising the Gold Coast development said at West Burleigh that the printing operation would be fed by two 4-color sheet fed presses. There would be a pre-press section and full bindery operation.

They said the press would

BRIDES AND HOMES - P27



Americans Gene Hughes (left) and Dennis Luker (centre) look

ASSETS EXCEED \$40,000,000



10 1/4% PA.

Managing Director: V.J. Alewood, J.P. General Manager: S.L. Caldwell, A.B.S. Directors: G.W. Rankin, W.J. Ware, J. Hammond, L.J. Thompson.

BRANCH OFFICES:—SOUTHPORT: 26 Nerang Street, 32 1066. Sundale Shopping Complex, 31 0433. **BROAD-BEACH:** 2713 Main Place, 38 2577. **BURLEIGH HEADS:** 23 James Street, 35 1088. **PALM BEACH:** 1142 Gold Coast Highway, 34 1490. **COOLANGATTA:** 11 Griffith Street, 36 3738.

GOLD COAST PERMANENT BUILDING SOCIETY

**Flood
protest
meeting
called**

A flood damage protest meeting is to be held tomorrow at the Gold Coast Ladies Bowling Club Pavilion, in Kalimna Drive, Moana Park at 7.30pm.

The meeting is open to all residents and ratepayers of the Albert Canal Estates. Parliamentarians and Shire Councillors have been invited to attend.

The meeting has been called by the Albert Canal Estates Association.

The organisation is proposing an injunction to restrain further subdivision until a complete flood investigation is made.

It also wants the Shire Council to widen the Monaco Street bridges as an emergency safeguard.

The committee will also propose that a senior civil engineer investigator should be appointed by the Federal Government to examine and report on Gold Coast flood control to federal and state authorities.

Cont. from P1

The homes will occupy a 25-30 perch block.

They will be built of materials to blend with the environment.

At Zareo Industrial Gardens, Ambassador College will provide industrial buildings that will be an example and show what light industry can look like in a landscaped setting.

The College believes the right atmosphere has a positive and uplifting effect on people and helps keep morale high.

Ambassador College has been quietly organising its local operation for the past 10 months, assisted by estate agent Mr. Kel Sweaney of Burleigh Heads.

The West Burleigh site was chosen after Ambassador College had made an extensive survey of potential decentralisation sites from Albury to Southport.

A meeting with Jim Dutton, the Gold Coast City Industrial promotions officer, led them to Burleigh Heads, where Mr. Sweaney showed them the plans for Zareo Industrial Gardens, with which he is associated as a director.

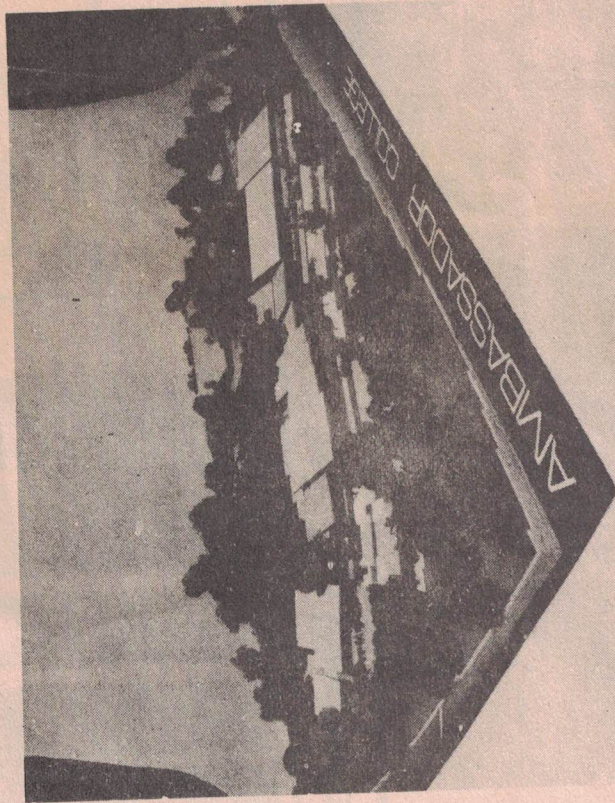
"When we saw the site, we were 'sold,'" they said. "We realised this was the ideal place for our printing operation."

Work will begin on the buildings within three months and on the houses at about the same time.

Dennis Luker said: "While the Worldwide Church of God does not believe in imposing its message on people, we want people to know about us and we welcome inquiries. We can be contacted by phoning 35-4233.

The chairman of the

'IT'S AN IDEAL PLACE'



LET YOUR PRESENT

... be one which increases in value with the passing years.
... Australia's National Gem.
Pick your own Opal, and have it designed to suit your personality.

The Lure of the Opal

*** TAKE ADVANTAGE ... as our Overseas Visitors do, of our expertise in the Opal Industry.**

... For Advise on selection, purchase, mounting, and investment in Opals, call on

DICK SOWER

BLACK OPAL

*** FULLY LICENSED**

PLAYROOM

- * **THURSDAY**
Hawaiian Nite
- * **SATURDAY**
Cabaret Nite
- * **SUNDAY**

3 BIG NITES

WEEKLY

Rock 'N' Roll Nite

Join the Coolangatta Guest House Fun Crowd

... of the
Albert Shire, Cr. Hugh
Muntz, said: "I extend to
Ambassador College a warm
welcome to a fast growing
shire. I feel confident the
move they are making will
prove happy and suc-
cessful."

Tel. 381634 Suite 38 - "THE CENTRE" ARCADE
SURFERS PARADISE

BOUNIQUE

KEL SWEANEY



MARKETING AGENTS FOR

Burleigh Gardens Industrial Park

ARE PROUD TO WELCOME

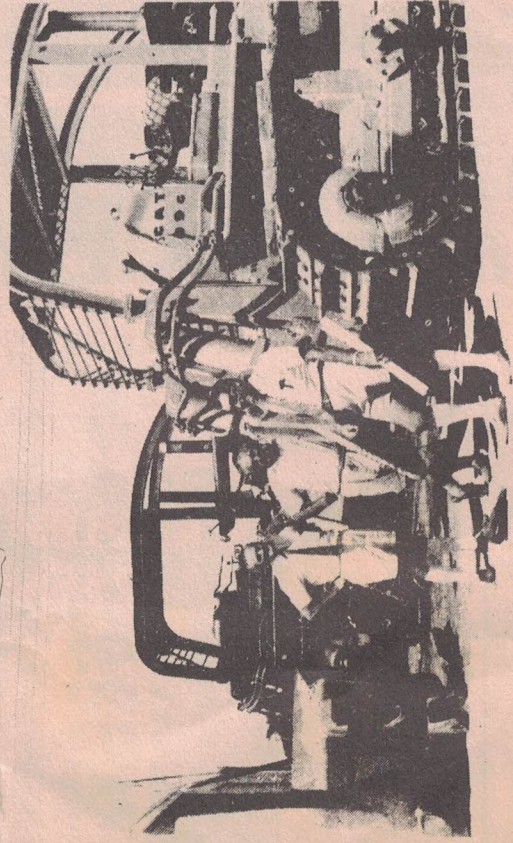
AMBASSADOR COLLEGE

To this unique and outstanding industrial complex.
(SEE STORY PAGE 1)

Because of careful architectural planning of this
Garden Industrial Park all of phase 1 has been sold
to carefully selected manufacturers.

Phase 2 is now completed and open for
negotiation.

A further 15½ acres of superb industrial land
is now available ranging in area from ½ acre
to 3 acres. Prices commence at \$48,000
per 4,047 square metres (1 acre)



FOR FURTHER DETAILS AND INSPECTION

REAL ESTATE
PTY. LTD.
MEMBER

